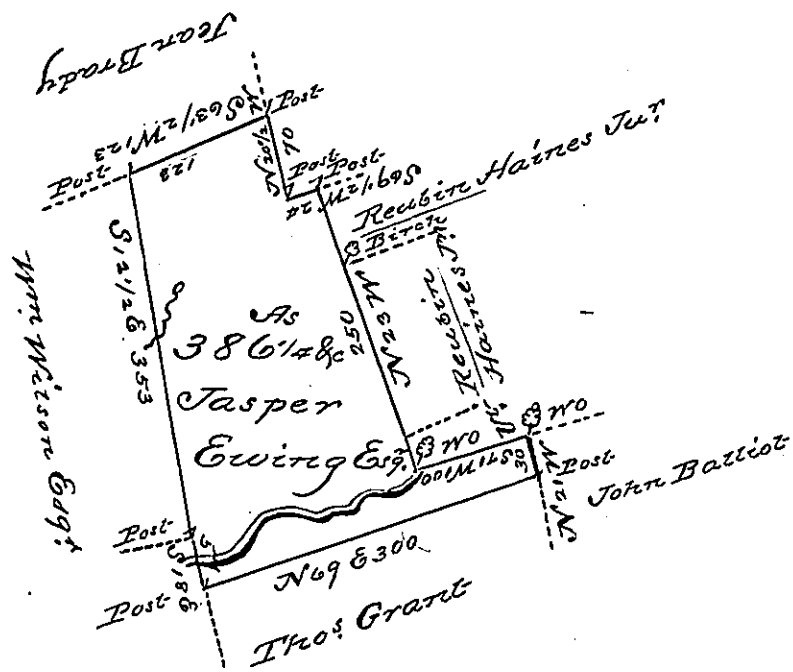


Butler  
Luzette.



250  
270

A Draft of a tract of land Called \_\_\_\_\_  
 Situate on the Waters of Nescopeck, the County  
 of Luzerne Containing Three Hundred and Eighty  
 Six acres 1/4 & allow<sup>ed</sup>, conveyed for Jasper Ewing  
 the 28<sup>th</sup> day of Sept. 1793 by virtue of a War-  
 rant dat<sup>d</sup> 13<sup>th</sup> day of June 1793

By Wm Gray Dobb.

To Daniel Brodhead Esq<sup>r</sup> }  
 Survr Gen<sup>l</sup> }

IN TESTIMONY that the above is a copy of the original remaining on file in  
 the Department of Internal Affairs of Pennsylvania, made  
 conformably to an Act of Assembly approved the 16th day of  
 February, 1833, I have hereunto set my Hand and caused  
 the Seal of said Department to be affixed at Harrisburg,  
 this fifth day of July 1898

*James W. Latta*  
 Secretary of Internal Affairs.